

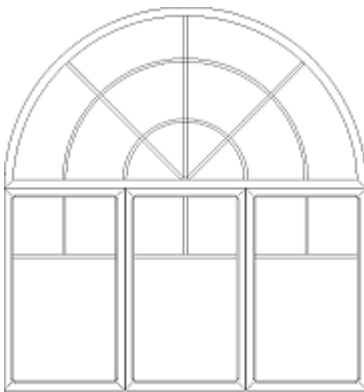
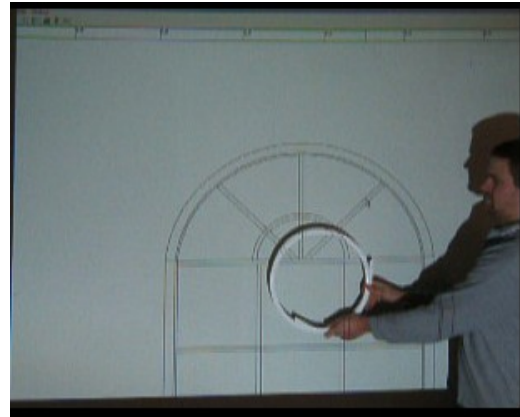


DaVinci Works GridLock

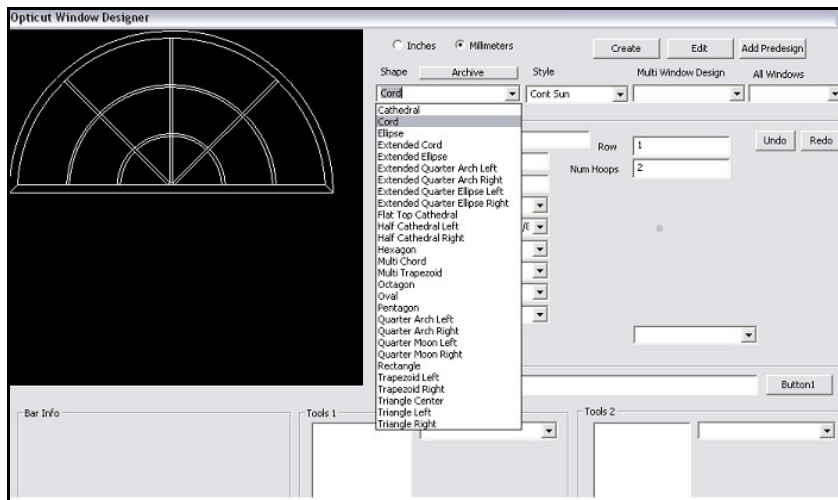
The DaVinci Works GridLock program was designed as a tool to simplify the design and fabrication of windows with more complex grill configurations. The program allows the user to select from pre-defined window styles, arrange them in the desired configuration, add desired style and shape of grills and align the windows and grills with the adjacent selection.

The program captures all of the measurements required to construct the grills. These measurements can be printed in the form of “cutting lists” or saved in a file which can be imported

into an automatic grid notching machine. The program also allows for scaled image projection onto a work surface, allowing the user to trace the image.



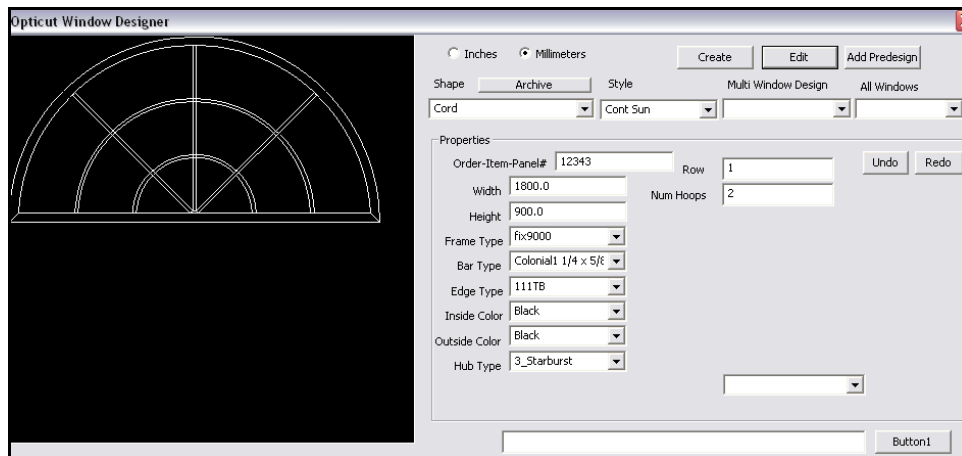
The above window was designed on the GridLock system. The following screen shots provide a simplified example of the capabilities of this program:



WINDOW DESIGN

Selections are made from drop-down boxes. The “Shape of the window” drop-down is illustrated above. Other boxes referred to in the steps below are illustrated in the screen shot following.

1. Select the shape of the transom portion of the configuration. In this case “Cord”.
2. Select the Grill Style desired
3. Enter the width, height and frame type of the shape.
4. Enter the Bar Type (the grill type to be used in the window), the Edge Type, the colour(s)
5. Enter the number of hoops and the Hub Type (for spoke pattern)



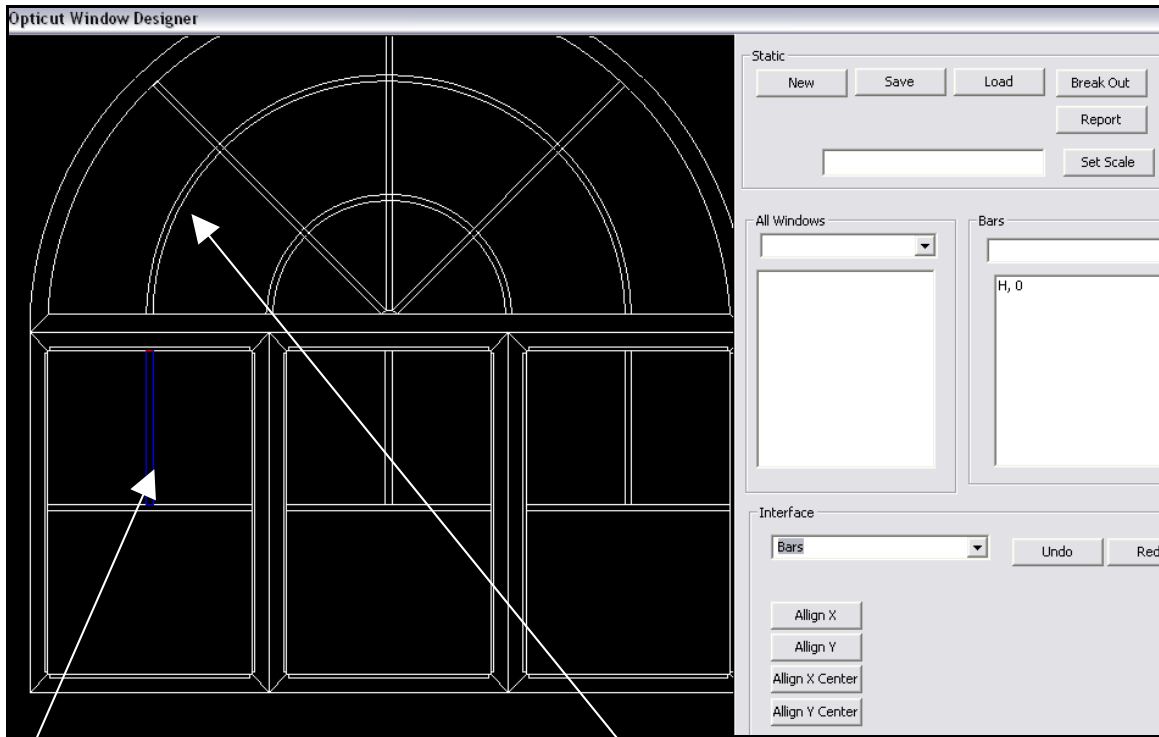
6. Click “Create” and the window and grill pattern is drawn on the left.

Once a window is created, the spacing of the hoops and the angles of the spokes may be edited within the overall dimensions of the window.

To design the bottom three rectangular windows in our example, you create a new window. Depending on the “Row” number you have assigned, the windows appear in the desired configuration.

GRILL ALIGNMENT

The grills can be aligned with the grills in adjacent windows by simply highlighting the two grills to be aligned and the “Align X” and “Align Y” controls.



1. *Highlight grill bar – the grill bar turns blue*
2. *Highlight the hoop grill that you wish to align. It will also turn blue. Click the button labeled “Align Y”. DaVinci GridLock will align the bars in the illustration and save the exact measurement. Once this is done for each grill point, the resulting file can then be printed for production or exported electronically to the grill notcher.*

A more detailed video demo is available to illustrate the features of the DaVinci GridLock software. Please contact us for further information.



OPTICUT TECHNOLOGIES INC.
4352 BATH ROAD KINGSTON, ONTARIO CANADA K7M 4Y7
TEL. 613.389 9952 www.opticut.biz
John O. Ferreira, P.Eng.